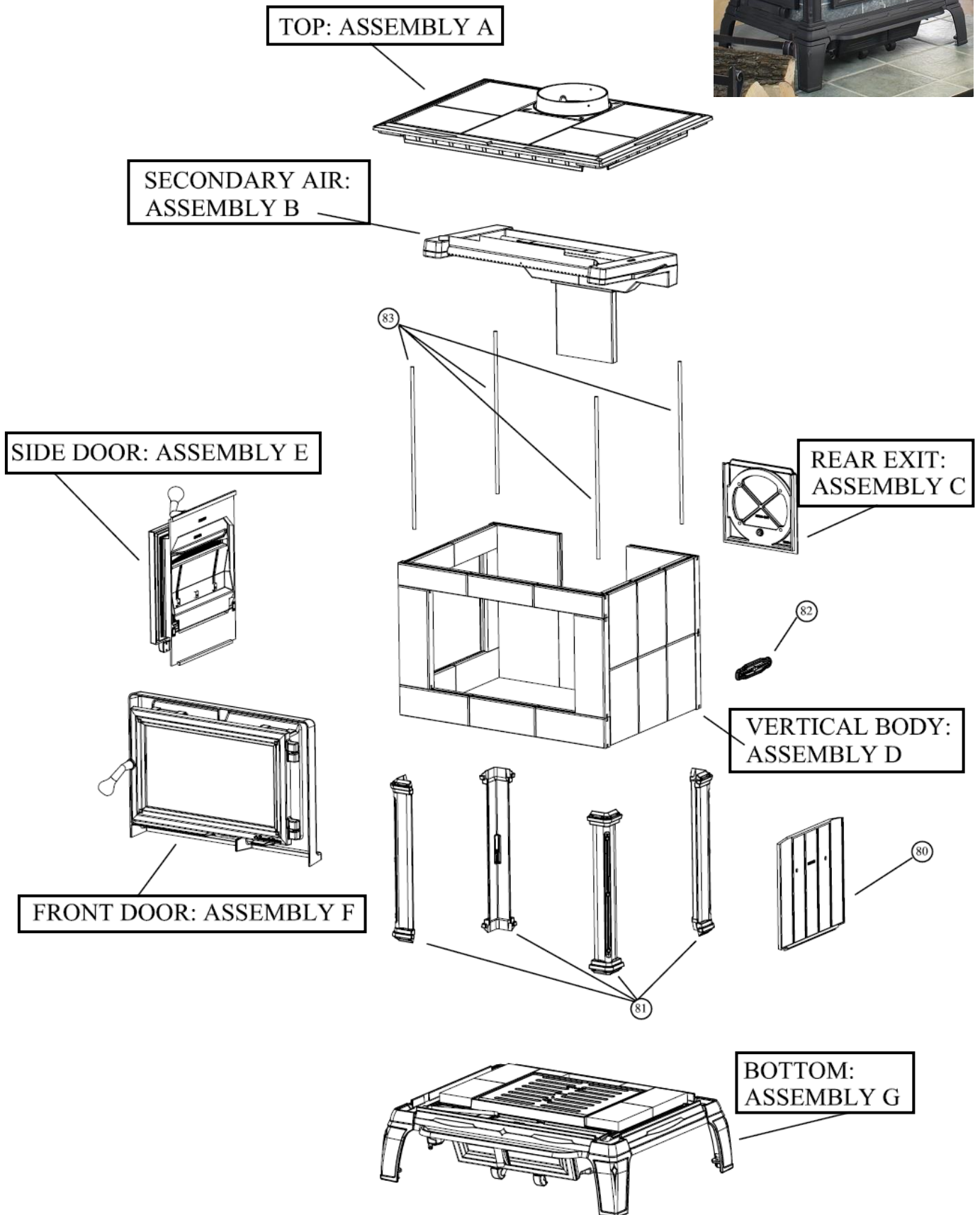
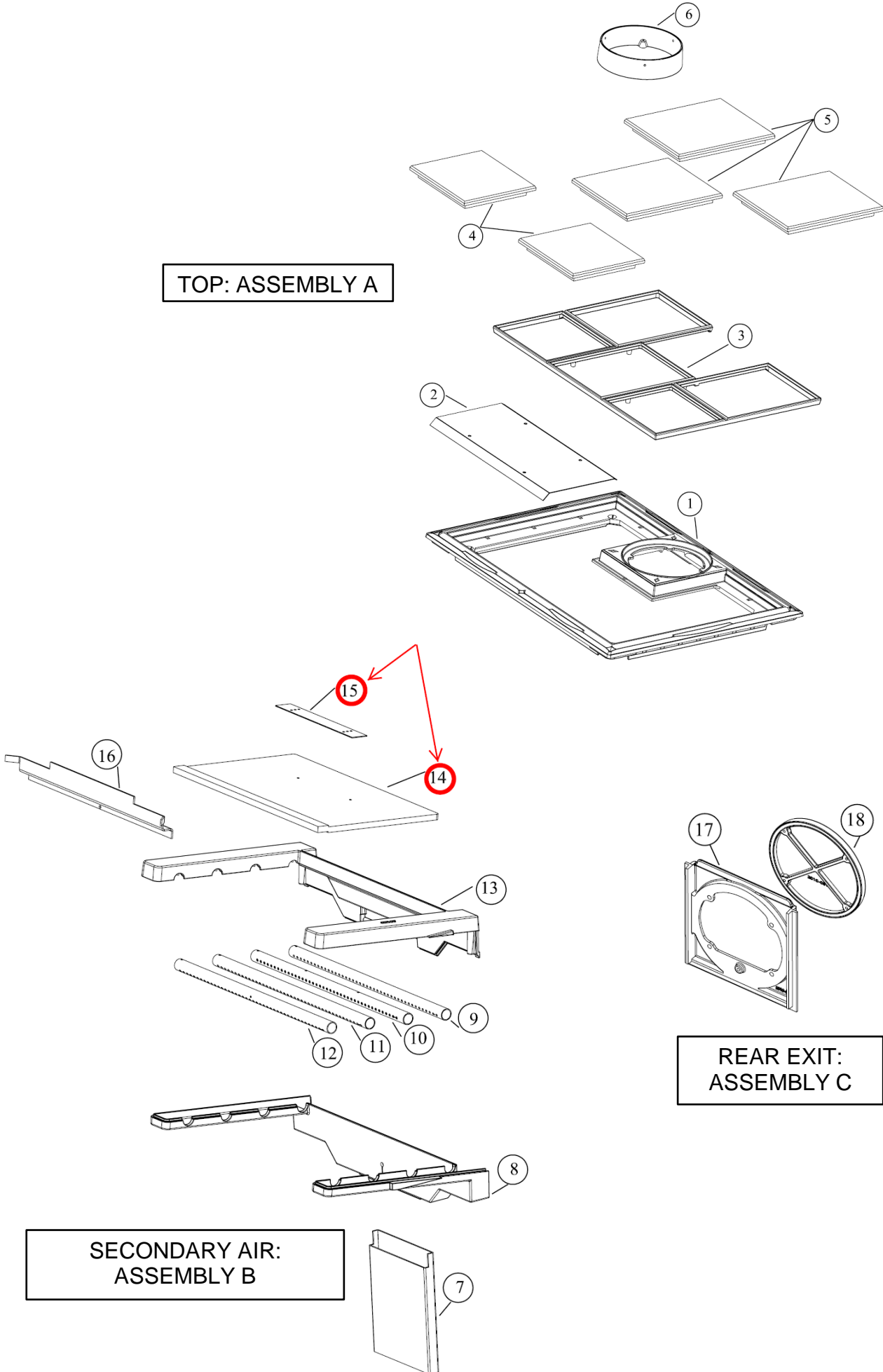
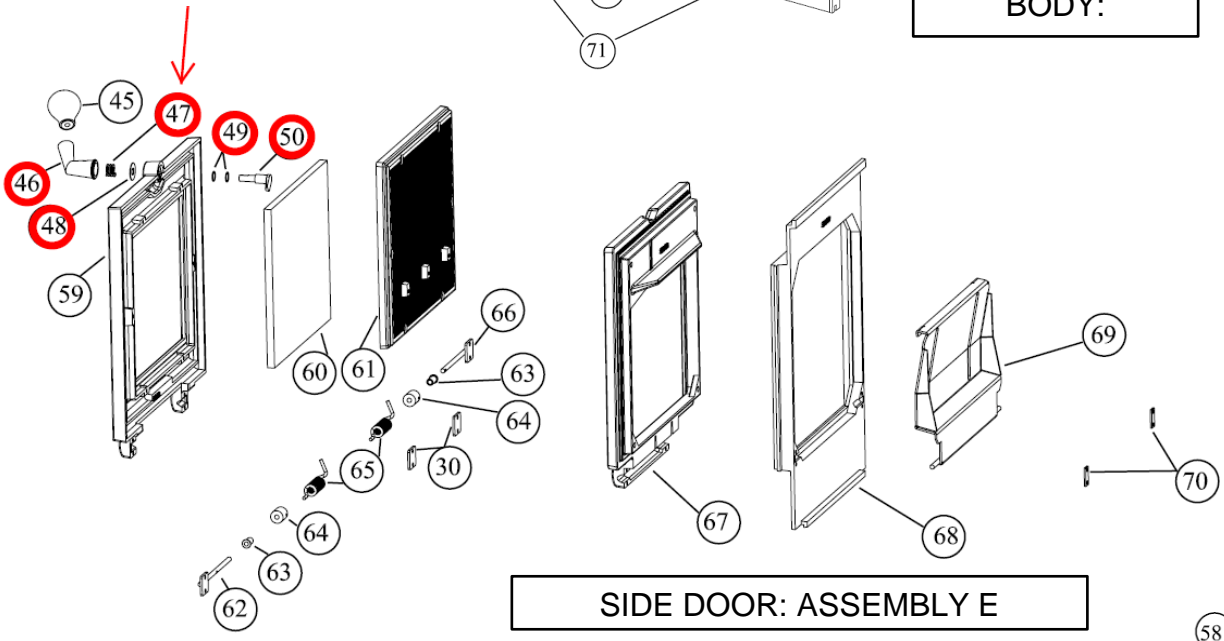
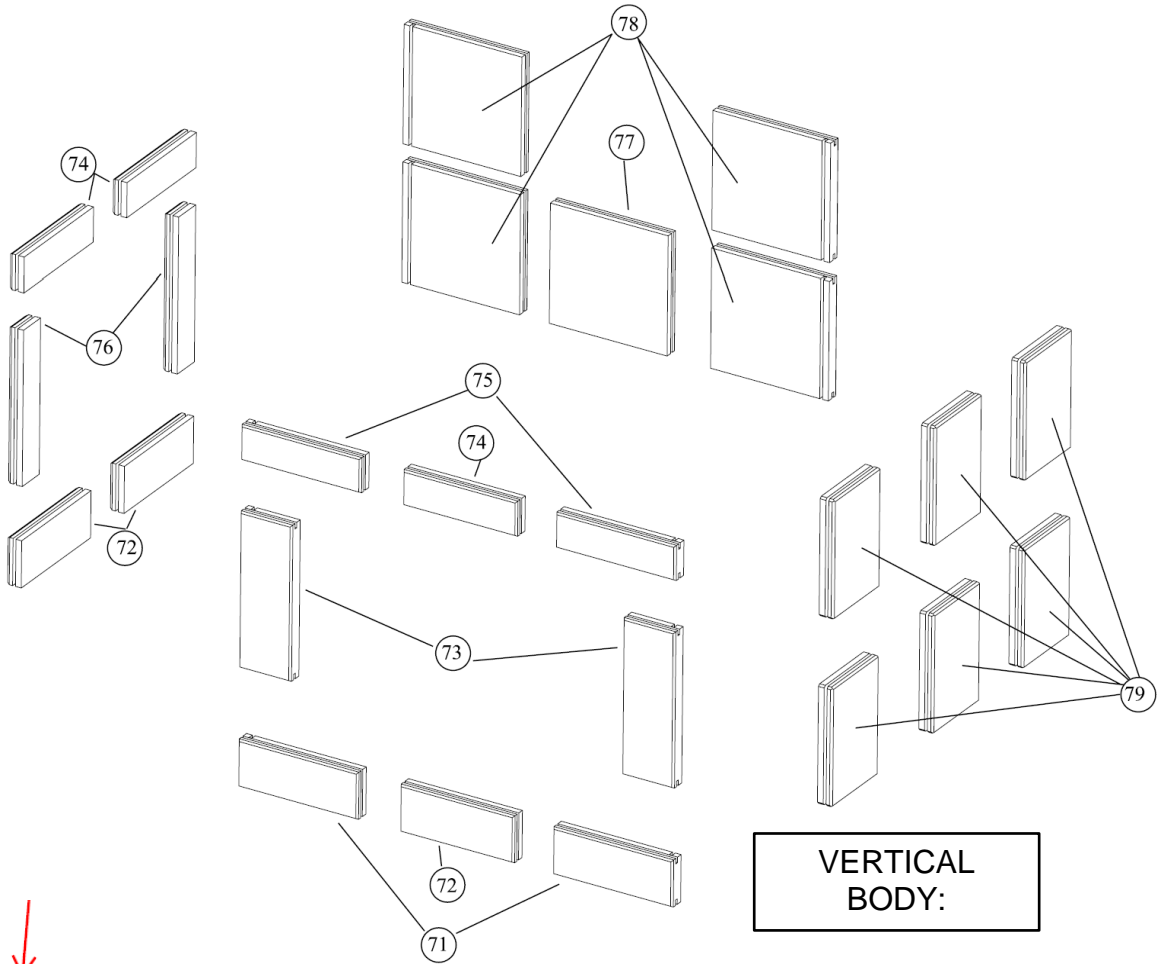




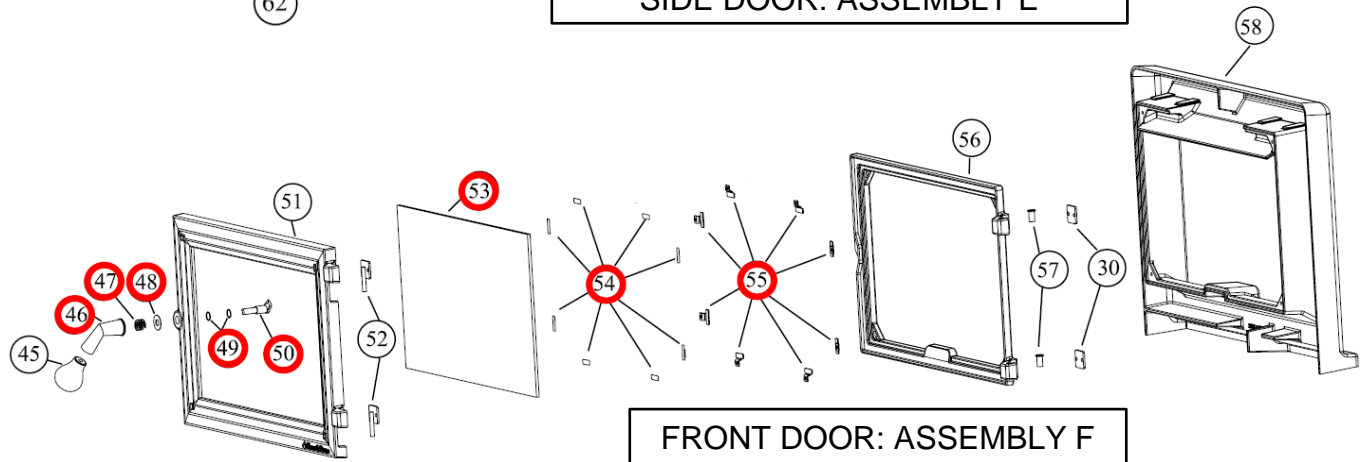
EQUINOX Model 8000



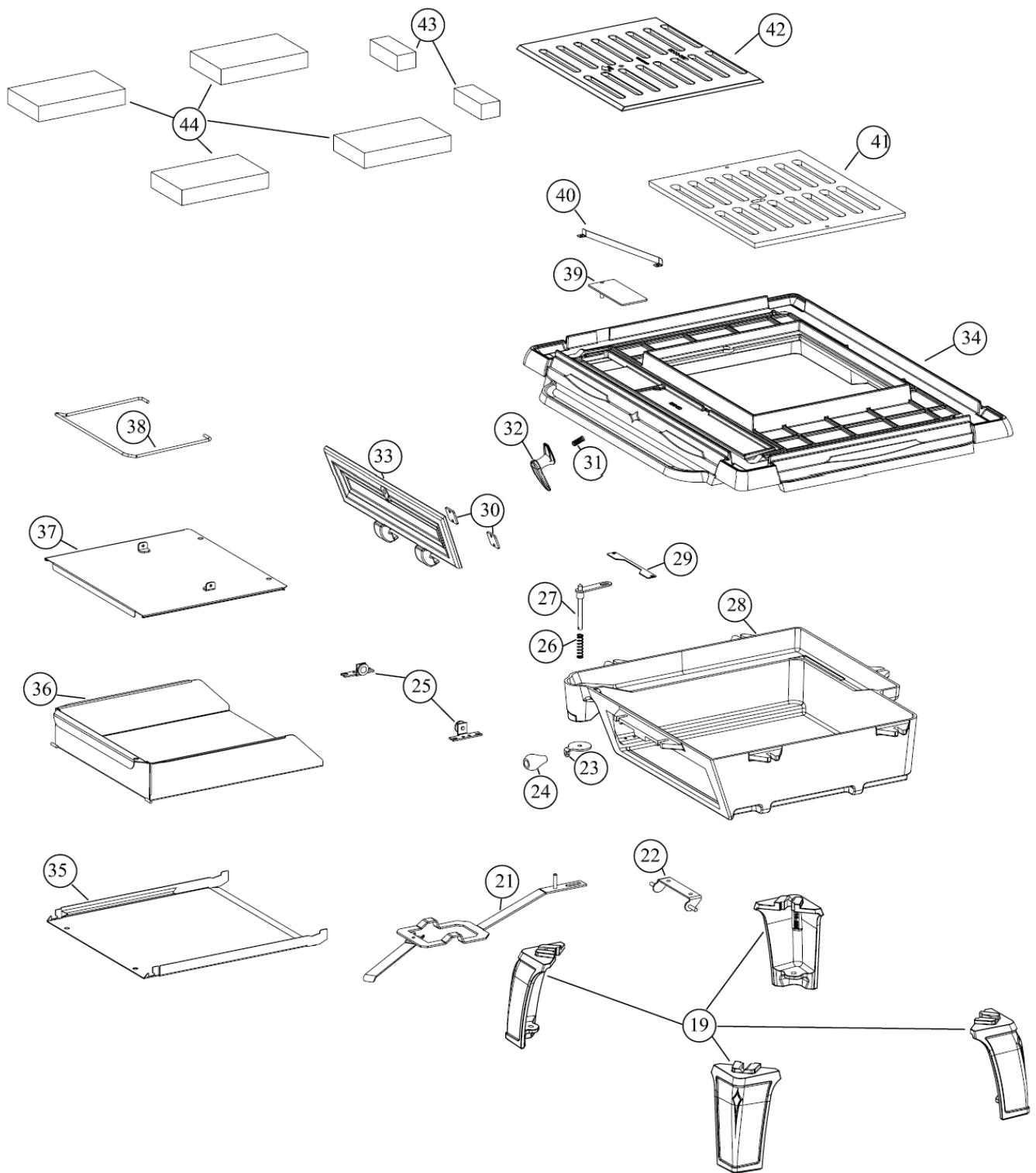




SIDE DOOR: ASSEMBLY E



FRONT DOOR: ASSEMBLY F



BOTTOM: ASSEMBLY G

主要パーツ

Key	Part #	Description	定価(税別)	
	3110-051	ガスケット: フロントドア用	1/2" (12.7)	180cm 1,200/m
	3110-051	ガスケット: サイドドア用	1/2" (12.7)	150cm 1,200/m
	3110-057	ガスケット: 灰受けドア用	3/8"Low (9.5)	110cm 1,100/m
	3110-056	ガスケット: ガラス用	1/4"(6.4)	160cm 900/m
	3120-021	ガスケット: ガラスクリップ用	セクション	8ヶ 400/ヶ
14,15	90-76010	バッフルキット(セラミック):イキノックス8000		28,300
42	2010-027	グレート:イキノックス8000 (390x315)		34,600
53,54	90-58205	ガラスキット:イキノックス8000 (277x483, t5)		55,900
* ガラスキットには、ガラス用ガスケット、ガラスクリップ、ビス、ガラスクリップ用ガスケットが含まれます。				

Key	Part #	Description	定価(税別)	
A	1	2010-095 TOP: MATTE,EQU		73,300
A	2	5000-402 HEATSHIELD: TOP, EQU		26,800
A	3	2010-090 SUPPORT: TOP STONE,EQU		72,000
A	4	1041-060 STONE: POL, T,9.62"x8.99"x1.18",EQU		28,600
A	5	1041-070 STONE: POL,T(LG),12.02"x9.62"x1.18"EQU		22,800
A	6	2010-082 COLLAR: FLUE EXIT,EQU		34,600
B	7	5000-301 PIPE: AIR, SECONDARY RISER, EQU		52,300
B	8	2010-085 PLENUM: AIR,SECONDARY,BOTTOM,EQU		53,400
B	9	5000-581 AIR TUBE 1: SECONDARY, EQU		27,500
B	10	5000-582 AIR TUBE 2: SECONDARY, EQU		27,500
B	11	5000-583 AIR TUBE 3: SECONDARY, EQU		33,600
B	12	5000-584 AIR TUBE 4: SECONDARY, EQU		27,500
B	13	2010-087 PLENUM: AIR,SECONDARY,TOP,EQU		62,600
B	14,15	90-76010 BAFFLE:EQU	バッフルキット	28,300
B	14	3120-001 BOARD: CERAMIC,BAFFLE,EQU		
B	15	5021-066 BRACKET: BAFFLE,SS,HER 1		
		4300-0120 PIN: COTTER,1/8x2",SS		800
B	16	5000-401 SUPPORT: BAFFLE, EQU		20,500
C	17	2010-080 FRAME: FLUE,MATTE,EQU		56,800
C	18	2010-081 PLATE: FLUE,EQU		37,400
G	19	2010-005 FOOT: MATTE,EQU		37,400
G	21	5000-113 ROD: SHAKER, ASH GRATE, EQU		27,100
G	22	5000-103 BRACKET: HINGE, ASH DOOR, EQU		6,900
G	23	5000-131 LEVER: PRIMARY AIR, EQU		5,100
G	24	90-71010 HANDLE: PRIMARY,EQU		8,800
G	25	5000-102 GUIDE WHEEL, ASH DRAWER, EQU		10,700
G	26	5240-136 SPRING: LATCH,FRONT, SPC-56234		5,000
G	27	5000-133 ROD: PRIMARY AIR, LINKAGE, EQU		8,800
G	28	2010-010 FRAME: ASH PAN,EQU		114,400
G	29	5000-110 SUPPORT: ASH GRATE, EQU		2,400
E,F,G	30	5000-320 PLATE: HINGE, DOOR, BLACK OXIDE, EQU		4,500
		4500-1876 SCREW: MACH,10-24x1/2",PAN,PH,BLK OX		400
G	31	4500-2505 STUD: 3/8-16x1-3/8,FULLY THREADED		1,600
G	32	2010-017 HANDLE: DOOR,ASH PAN,EQU		5,900
G	33	2010-015 DOOR: ASH PAN,EQU		53,400
G	34	2010-020 BOTTOM: MATTE,EQU		157,300
G	35	5000-120 PAN: ASH DRAWER, EQU		34,200
G	36	5000-121 PAN: ASH TRAY, EQU		30,700
G	37	5000-122 PAN, ASH COVER, EQU		23,800
G	38	5000-123 HANDLE, ASH COVER, EQU		3,500
G	39	5000-130 PLATE: PRIMARY AIR, EQU		6,900
G	40	5000-135 SHUTTER: HOLD DOWN, PRIMARY AIR, EQU		5,300
G	41	2010-025 BASE: ASH GRATE,EQU		43,800

Key	Part #	Description	定価(税別)
G	42	2010-027 GRATE: ASH,EQU	グレート 34,600
G	43	1-0000-002 STONE : REFRACTORY, 1.6"X4"X1-1/4",E	5,000
G	44	1-0000-001 STONE : REFRACTORY, 4-1/2x7-1/2",EQU	7,500
E,F	45	90-71000 HANDLE: FRT/SIDEDOOR,EQU	ハンドルキット 8,400
E,F	3900-184	HANDLE: WOOD, EQU (フロントドア/サイドドア共通)	7,800
E,F	4500-1377	SCREW: MACH,1/4-20x2",PAN,PH,BL OX	600
E,F	90-73010	LATCH: FRT&SIDE DOOR,COIL SPNG,EQU	ラッチキット 12,600
E,F	46	5000-565 HANDLE CRANK: BLACK CHROME, EQU (フロントドア/サイドドア共通)	9,500
E,F	47	5240-138 SPRING: LATCH,WOOD STOVES,325#	2,500
E,F	48	5021-032 WASHER: FLAT,.406"IDx1"ODx.035"T,BLK	600
E,F	49	4700-0792 SPACER: DOOR LATCH,0.560"x0.500"x0.03	1,000
E,F	50	5000-322 LATCH, DOOR, FRONT, EQU (Deinsa)	※ラッチ単品の取扱いは終了しました
E,F	4500-2976	SCREW: SET,5/16-18x3/8",HALF DOG,SOCKE	800
F	51	2010-075 DOOR: FRONT,MATTE,EQU	66,100
F	52	5000-323 PIN: HINGE PLATE, DOOR, EQU	5,300
F	53-55	90-58205 GLASS: EQU	ガラスキット 55,900
F	53	3030-048 GLASS: 10.9"x19"x5mm,EQU	
F	54	3120-021 GASKET: GLASS CLIP, BLACK	400/ケ
F		3110-056 GASKET: ROPE,1/4",BLK,AD	160cm 900/m
F	55	5021-060 CLIP: GLASS,HER 1/TRI	1500/ケ
F	55	4500-2105 Glass Clip Screw	400/ケ
F	56	2010-070 FRAME: DOOR,FRONT,EQU	40,700
F	56	4500-0500 SCREW: MACH,1/4-20x3/4",FLAT,PH,BLK OX	400
F	57	5000-104 BUSHING: DOOR, 3/8"x1/2",BRASS(7815K1 2	
F	58	2010-040 PLENUM: AIR,PRIMARY,EQU	81,500
E	59	2010-055 DOOR: SIDE,MATTE,EQU	62,800
E	60	1041-030 STONE: POL,SIDE D,EQU,11.125"x9.5"x1.18"	30,000
E	61	2010-057 PLATE: STONE RETAINER,SIDE DOOR,EQU	50,100
		4500-0430 SCREW: MACH,1/4-20x5/8",PAN,PH,BL OX	400
E	62	5000-325 SHAFT:HINGE,L, EQU	3,500
E	63	5000-105 BUSHING:SHOULDER,EQU	3,100
E	64	5000-106 SLEEVE,SPRING RETAINING,EQU	4,500
E	65	5240-142 SPRING:TORSION,SIDE DOOR,EQU(SPC 40363)	11,000
E	66	5000-324 SHAFT:HINGE,R, EQU	3,500
E	67	2010-045 FRAME: DOOR,SIDE,OUTER,EQU	53,400
		4500-0500 SCREW: MACH,1/4-20x3/4",FLAT,PH,BLK OX	400
E	68	2010-047 FRAME: DOOR,SIDE,INNER,EQU	50,200
E	69	5000-310 GUARD: ASH, SIDE DOOR, EQU	25,700
E	69	4500-3085 SCREW: SHOULDER,5/16"Dx1/2"L,SOCKET	1,200
E	69	4600-0300 WASHER: FLAT,1/4,USS,BLK OX (3/4" OD)	600
		90-99200 NOISE REDUCTION SPRING: SIDE DOOR, EQU	5,900
E	70	5350-032 CLIP: HINGE,SIDE DOOR,BLACK OXIDE, HER2	600
		4500-1876 SCREW: MACH,10-24x1/2",PAN,PH,BLK OX	400
D	71	1041-050 STONE: POL, ,FBS,9.86"x3.75"x1.18",EQU	12,400
D	72	1041-020 STONE: POL, ,DB,9.375"x3.75"x1.18"EQU	11,700
D	73	1041-054 STONE: POL, ,FC,12.43"x4.25"x1.18",EQU	17,700
D	74	1041-025 STONE: POL, ,DT,9.375"x2.8"x1.18",EQU	9,900
D	75	1041-056 STONE: POL, ,FTS,9.86"x2.8"x1.18",EQU	9,600
D	76	1041-022 STONE: POL, ,DC,12.43"x2.3"x1.18",EQU	10,400
D	77	1041-015 STONE: POL, ,RC,9.7"x9.5"x1.18",EQU	31,200
D	78	1041-010 STONE: POL, ,RS,9.7"x9.5"x1.18",EQU	31,600
D	79	1041-040 STONE: POL, ,S,9.7"x9.5"x1.18",EQU	19,800
	80	2010-065 PLATE: SIDE,EQU	59,600
	81	2010-030 LEG: SIDE,MATTE,EQU	56,800
	82	2010-067 TRIM: SIDE,MATTE,EQU	12,400
	83	5210-2320 ROD: THREAD,3/8-16x21",0.31"&2",H	5,900